

## **Trans-rectal quantitative Shear Wave Elastography : application to prostate cancer - A feasibility study**

**Poster No.:** C-1748  
**Congress:** ECR 2011  
**Type:** Scientific Exhibit  
**Authors:** J.-M. Correas<sup>1</sup>, A. KHAIROUNE<sup>2</sup>, A.-M. Tissier<sup>3</sup>, V. Vassiliu<sup>3</sup>, D. EISS<sup>3</sup>, O. Hélénon<sup>4</sup>; <sup>1</sup>Paris Cedex 15/FR, <sup>2</sup>Paris, Cedex 15/FR, <sup>3</sup>Paris/FR, <sup>4</sup>Paris, Cédex 15/FR  
**Keywords:** Ultrasound, Elastography, Urinary Tract / Bladder, Oncology  
**DOI:** 10.1594/ecr2011/C-1748

Any information contained in this pdf file is automatically generated from digital material submitted to EPOS by third parties in the form of scientific presentations. References to any names, marks, products, or services of third parties or hypertext links to third-party sites or information are provided solely as a convenience to you and do not in any way constitute or imply ECR's endorsement, sponsorship or recommendation of the third party, information, product or service. ECR is not responsible for the content of these pages and does not make any representations regarding the content or accuracy of material in this file.

As per copyright regulations, any unauthorised use of the material or parts thereof as well as commercial reproduction or multiple distribution by any traditional or electronically based reproduction/publication method is strictly prohibited.

You agree to defend, indemnify, and hold ECR harmless from and against any and all claims, damages, costs, and expenses, including attorneys' fees, arising from or related to your use of these pages.

Please note: Links to movies, ppt slideshows and any other multimedia files are not available in the pdf version of presentations.

[www.myESR.org](http://www.myESR.org)

## Purpose

Prostate cancer is the 2<sup>nd</sup> leading cause of cancer death in men. It is also the most common diagnosed malignancy in men with near 190.000 new cases in the USA in 2008. Despite the larger use of biological tests (such as prostate specific antigen (PSA)) and imaging modalities (trans-rectal ultrasonography (TRUS) and Magnetic Resonance Imaging (MRI)), there is a slight increase in the annual death rate while the mortality remains stable. Due to the limited sensibility of TRUS (60 to 70%), a normal examination should not delay the systematic biopsies if digital rectal examination or PSA are abnormal.

The purpose of our study was to evaluate the feasibility of trans-rectal quantitative Shear Wave Elastography (SWE) for prostate cancer evaluation.

## Methods and Materials

21 patients presenting with increased PSA values (4-10 ng/mL) were prospectively enrolled after signing an informed consent form. The prostate was studied using trans-rectal ultrasound (TRUS) with spatial compounded B-mode, colour Doppler US (CDUS) and SWE on the Aixplorer system (Supersonic Imagine, Aix-en-Provence, France; transducer SE12-3). Elasticity measurements and ratios between nodules and adjacent parenchyma were calculated.

Contrast-enhanced US (CEUS) was performed using low MI pulse subtraction after injection of 4.8-9.6 ml of SonoVue® (Bracco, Milan, Italy) using an Aplio XG system (Toshiba MS, Nasu, Japan).

Imaging findings were correlated to sextant prostate biopsies (n=12) and targeted biopsies on suspicious areas (n=2-6) detected at SWE and CEUS. MRI with axial and coronal T2w acquisition, axial T1w acquisition, diffusion and dynamic contrast-enhanced MRI (Signa 1.5T and Discovery MR450, GE HealthCare, Milwaukee, WI, USA) was also evaluated.

The blinded analysis of the SWE acquisition was performed retrospectively from cine-loops and frames. Normal and abnormal patterns were matched with pathology results.

## Results

In 3 patients, it was not possible to localize normal and abnormal patterns using SWE due to a technical problem during the export of the data. The analysis was performed from the remaining 18 patients (mean age  $65 \pm 6$  years, min 54 - max 79). The PSA values were  $6.9 \pm 2.2$  ng/mL.

Eight patients exhibited significant prostate adenocarcinomas. Among the 26 nodules detected either at US or at pathology, 10 were adenocarcinomas with Gleason score above 6 and 16 were adenomatous hyperplasia or focal prostatitis. The correlation between B-mode + pathology and CDUS, CEUS or MRI could not be obtained for 3 / 3 / 4 nodules, respectively.

SWE was feasible in all patients. Signals were obtained in both the peripheral and the transition zones with good correlation to anatomical areas. Because of higher attenuation, the deepest transition zone was not correctly assessed over 4-5 cm. Macro-calcifications exhibited very high stiffness values.

Transition zone appeared heterogeneous with stiffness values above 40 kPa. SWE signals were adequate for all peripheral nodules. Limitations resulted from gas interposition and higher pressure of the end-fire transducer on the rectal wall and the adjacent posterior gland.

Prostate cancer nodules exhibited a high stiffness (mean  $55 \pm 45$  kPa, min 23/ max 180 kPa) than the adjacent peripheral gland (mean  $18 \pm 9$  kPa).

Peripheral adenomatous hyperplasia and focal prostatitis exhibited a significantly lower stiffness (mean  $19 \pm 5$  kPa, min 12/ max 28 kPa;  $p < 0.01$ ). The stiffness ratio between nodule and adjacent parenchyma was significantly higher for cancer ( $3.0 \pm 1.0$ ) compared to benign nodules ( $1.0 \pm 0.20$ ;  $p < 0.01$ ). The cut-off value of 1.5 allowed the best discrimination of the two populations.

The sensitivity (Se), specificity (Spe), Positive predictive value (PPV) and Negative predictive value (NPV) were calculated for each modality: CDUS, CEUS, SWE and MRI.

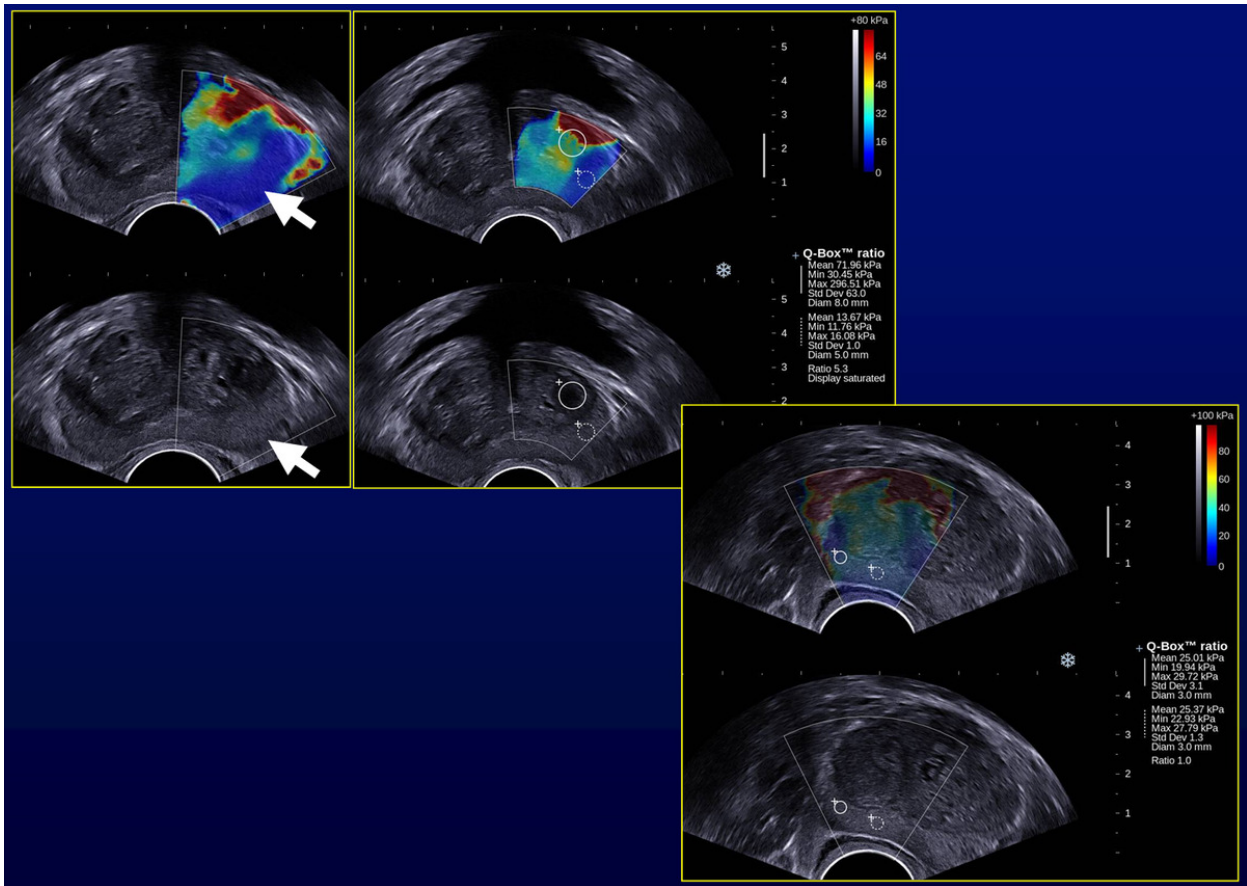
CDUS: Se= 50%; Spe= 73%; PPV= 50%; NPV= 73%

CEUS: Se= 67%; Spe= 86%; PPV= 75%; NPV= 80%

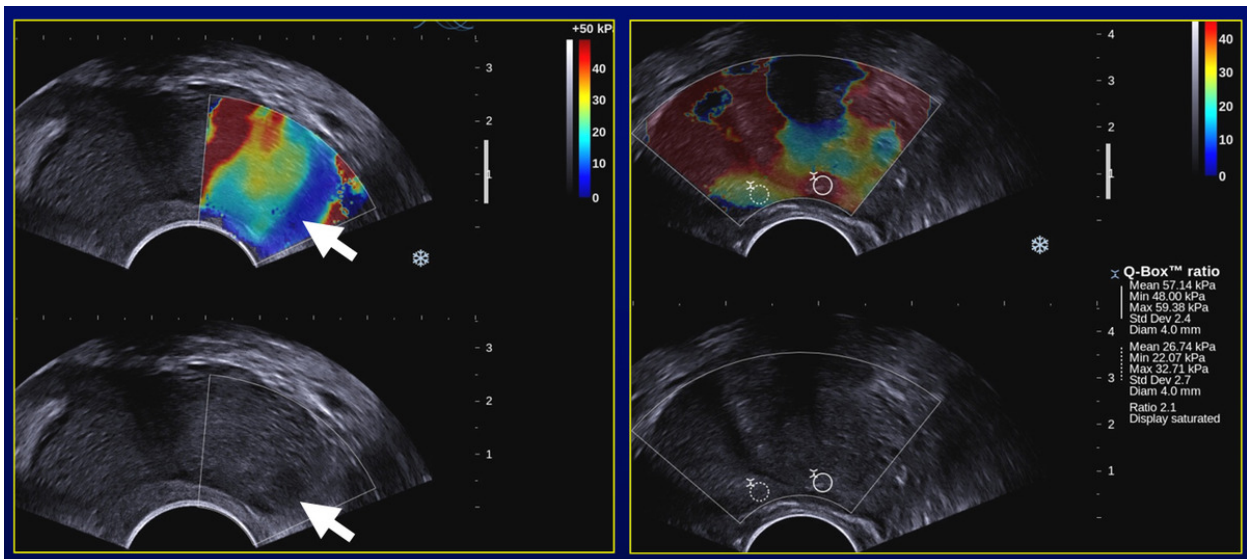
SWE: Se= 90%; Spe= 100%; PPV= 100%; NPV= 94%

MRI: Se= 62%; Spe= 78%; PPV= 62%; NPV= 78%

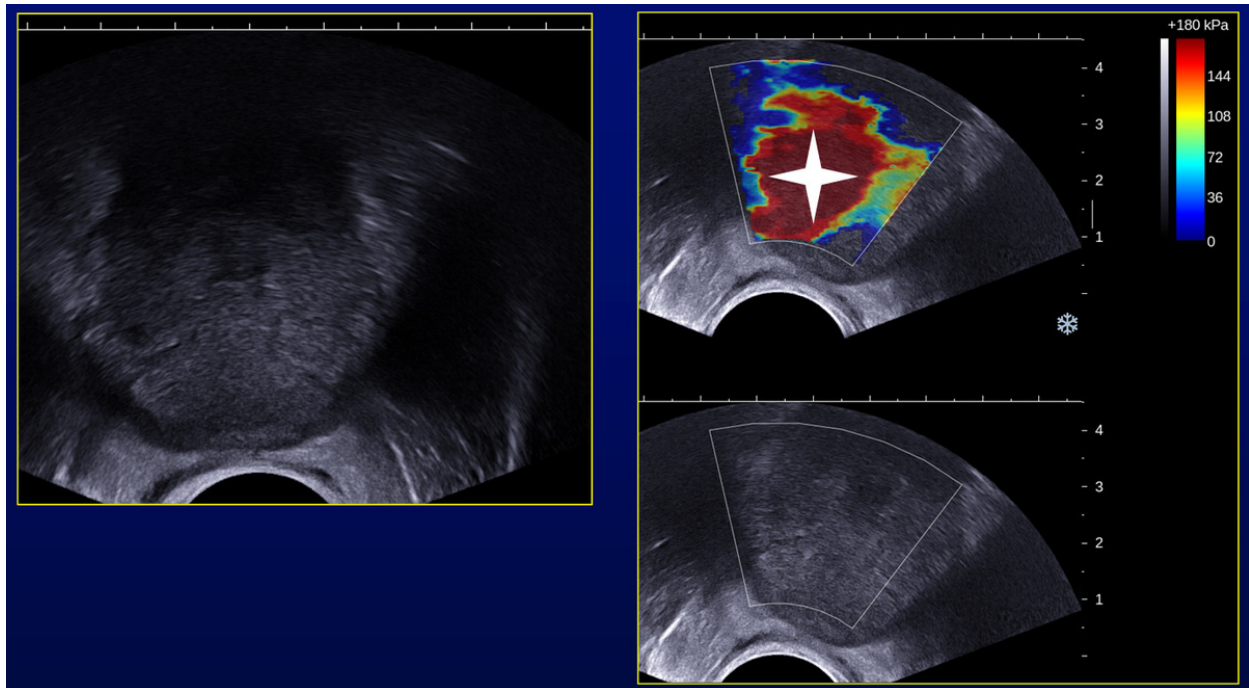
**Images for this section:**



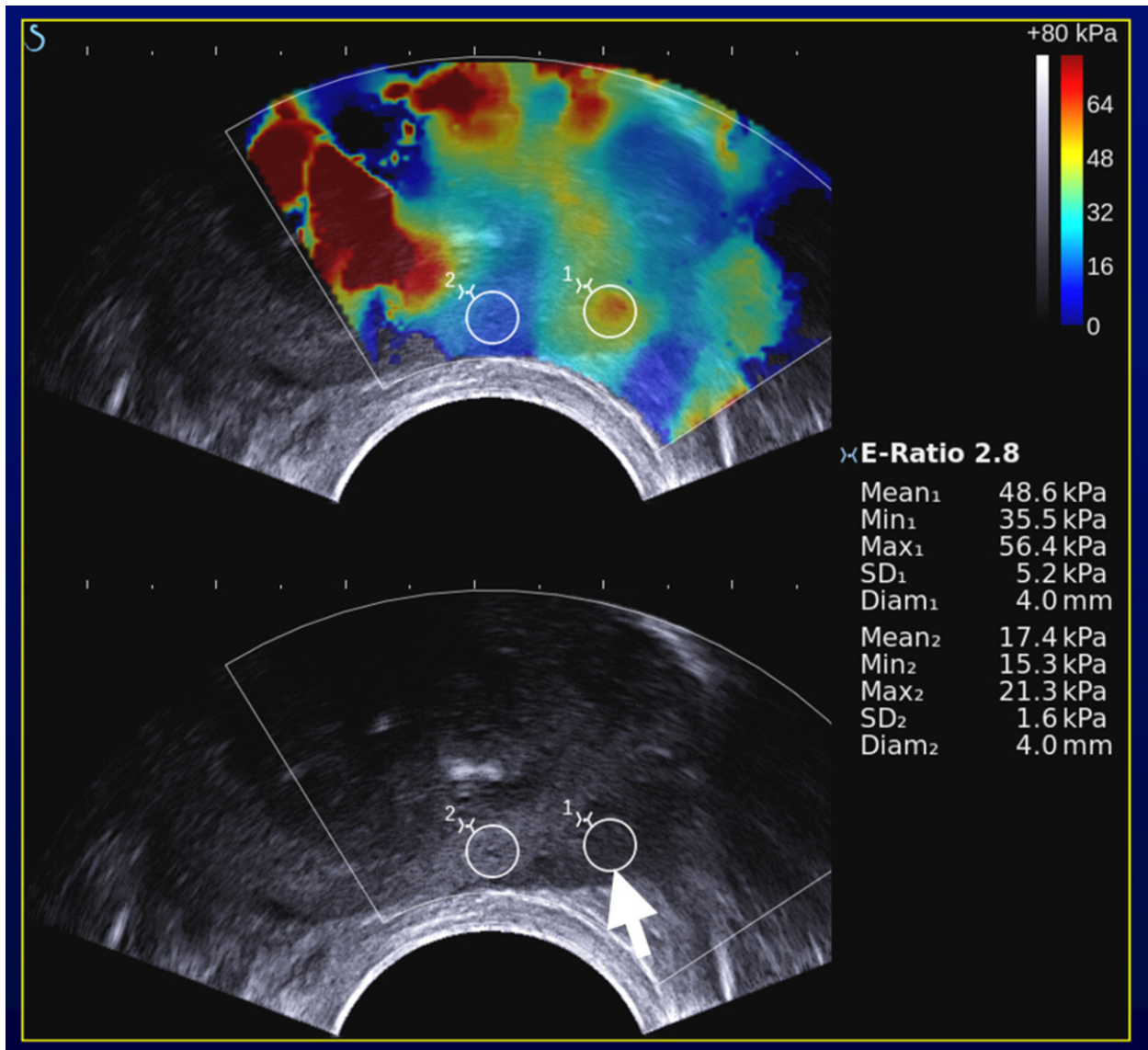
**Fig. 1:** SWE study of a normal prostate. Note the homogeneous coding of the SWE signals in the peripheral zone and the matching between SWE pattern and anatomical morphology



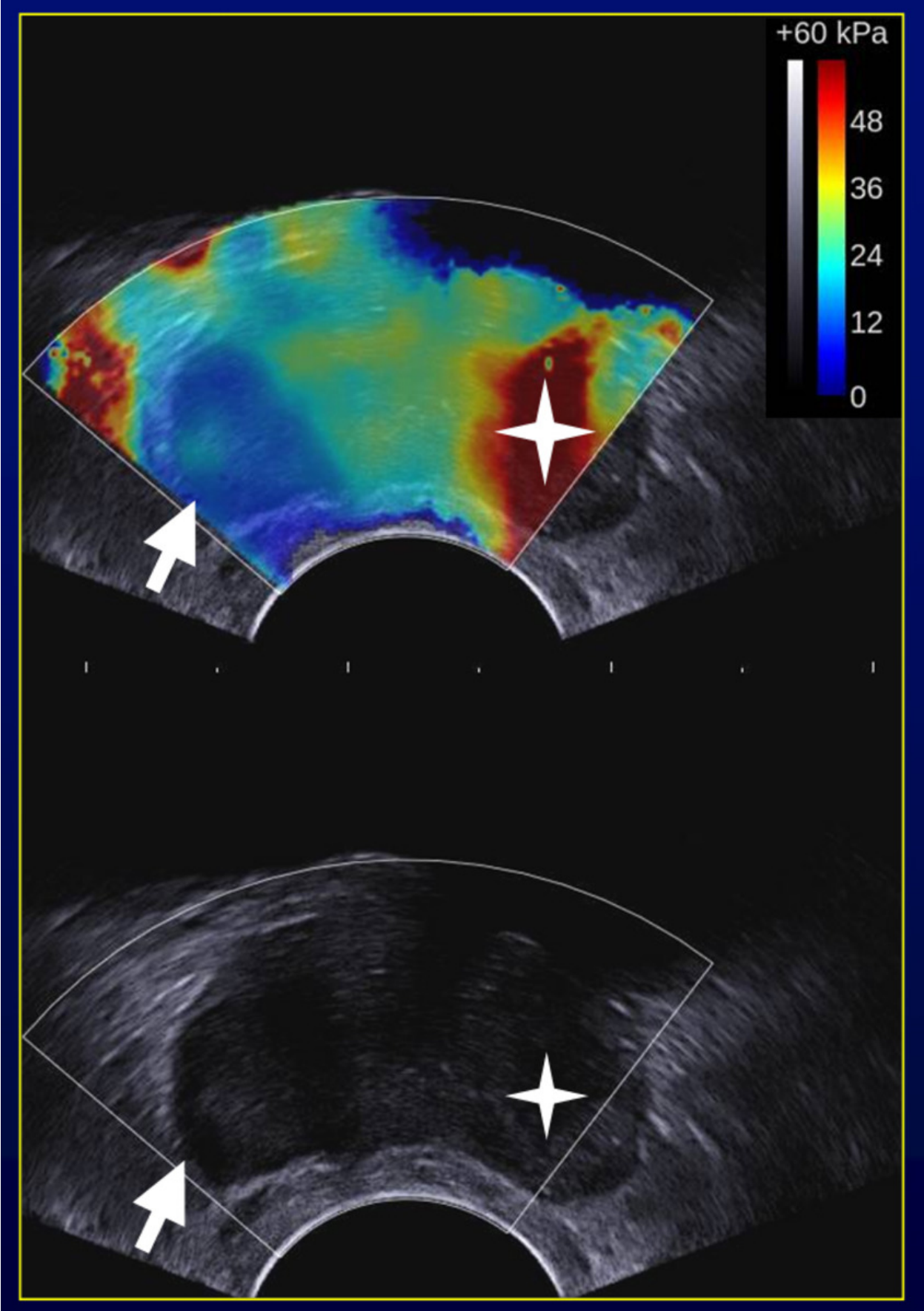
**Fig. 2:** Patient presenting a soft benign nodule in mid peripheral prostate zone (left picture, straight arrow). Close to the apex, a stiff area was detected and biopsy revealed a Gleason 7 adenocarcinoma (right picture).



**Fig. 3:** Patient with no detected nodule on B-mode imaging. However, SWE revealed a diffuse increase in stiffness values over 180 kPa within the entire prostate. All biopsies showed the presence of adenocarcinoma with a Gleason score of 9.



**Fig. 4:** The hypoechoic nodule in the peripheral zone at mid prostate exhibited a strong increase in stiffness values with a ratio of 2.8 compared to the surrounding peripheral parenchyma. This is the typical pattern of an adenocarcinoma.



**Fig. 5:** A poor visible nodule at B-mode imaging was reported on the right peripheral zone (straight arrow). It was benign at pathology. However, a stiff area was detected incidentally on the left peripheral zone. Pathology revealed a Gleason 7 adenocarcinoma.



## Conclusion

Trans rectal quantitative Shear Wave Elastography is a feasible technique for prostate cancer evaluation. It provides additional information about stiffness of nodules localized in the peripheral zone, complementary to that of CEUS. These preliminary results are encouraging but a larger multicentric evaluation remains necessary.

## References

Bercoff J, Tanter M, Fink M. Supersonic shear imaging: a new technique for soft tissue elasticity mapping. *IEEE Trans Ultrason Ferroelectr Freq Control*. 2004 Apr;51(4):396-409.

Athanasiou A, Tardivon A, Tanter M, Sigal-Zafrani B, Bercoff J, Deffieux T, Gennisson JL, Fink M, Neuenschwander S. Breast lesions: quantitative elastography with supersonic shear imaging--preliminary results. *Radiology*. 2010 Jul;256(1):297-303.

## Personal Information